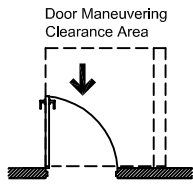
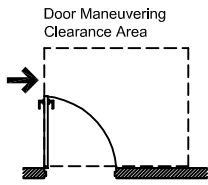


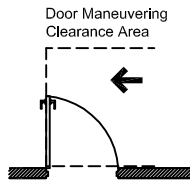
# California/ADA Plan Review Tools - Door Maneuvering Clearances



**FRONT APPROACH - PULL SIDE**  
1/8" = 1'-0"



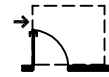
**HINGE APPROACH - PULL SIDE**  
1/8" = 1'-0"



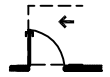
**LATCH APPROACH - PULL SIDE**  
1/8" = 1'-0"



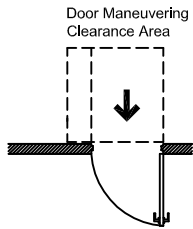
**FRONT APPR. - PULL SIDE**  
1/16" = 1'-0"



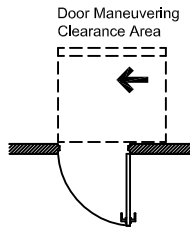
**HINGE APPR. - PULL SIDE**  
1/16" = 1'-0"



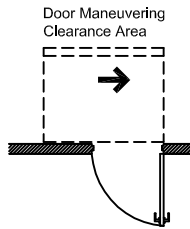
**LATCH APPR. - PULL SIDE**  
1/16" = 1'-0"



**FRONT APPROACH - PUSH SIDE**  
1/8" = 1'-0"



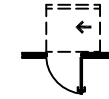
**HINGE APPROACH - PUSH SIDE**  
1/8" = 1'-0"



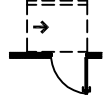
**LATCH APPROACH - PUSH SIDE**  
1/8" = 1'-0"



**FRONT APPR. - PUSH SIDE**  
1/16" = 1'-0"



**HINGE APPR. - PUSH SIDE**  
1/16" = 1'-0"



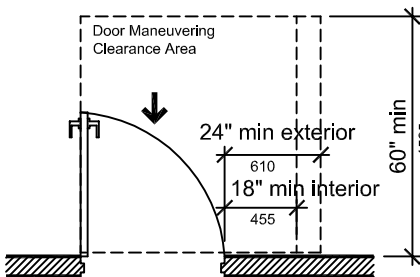
**LATCH APPR. - PUSH SIDE**  
1/16" = 1'-0"

**NOTE: some of these California requirements are more stringent than the ADA Standards**

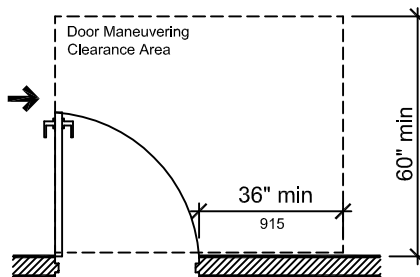


Actual Size Graphic Scale

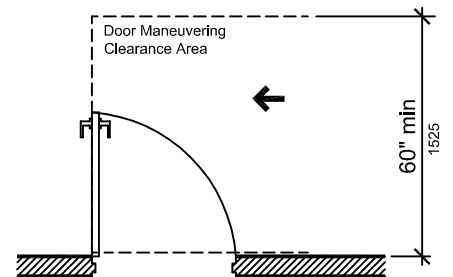
## 2010 CA / CBC Title 24 / ADA



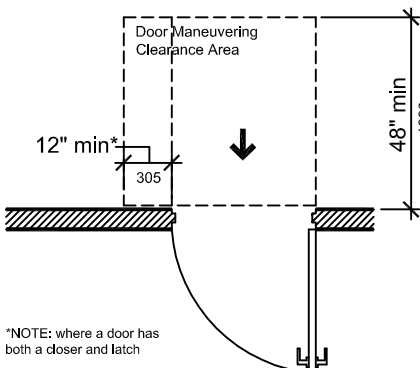
**FRONT APPROACH - PULL SIDE**  
1/4" = 1'-0"



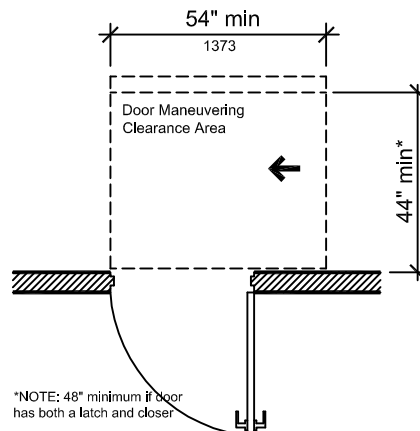
**HINGE APPROACH - PULL SIDE**  
1/4" = 1'-0"



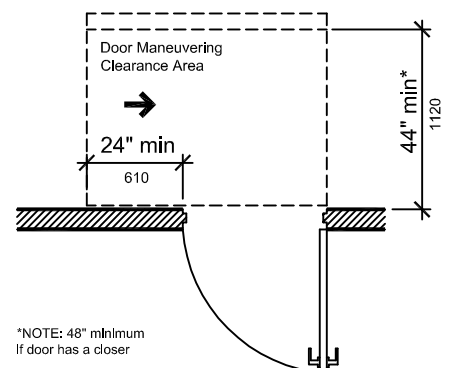
**LATCH APPROACH - PULL SIDE**  
1/4" = 1'-0"



**FRONT APPROACH - PUSH SIDE**  
1/4" = 1'-0"



**HINGE APPROACH - PUSH SIDE**  
1/4" = 1'-0"



**FRONT APPROACH - PUSH SIDE**  
1/4" = 1'-0"

\*NOTE: where a door has both a closer and latch

\*NOTE: 48" minimum if door has both a latch and closer

\*NOTE: 48" minimum if door has a closer